

Vol.3

smooth as silk  
in your mouth

# TAKASO Shave



**TAKASO**  
TAKAHASHI SOHONTEN INC.

## ◆ KAKIGORI (Japanese Shaved Ice)

In Japan, there is a culture called “ Kaki Gori” that has been shaved and eaten ice for long time. Its history is old, and it appears in ancient books written 1,000years ago.

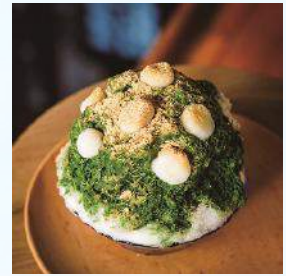
Still in Japan, as an indispensable menu in summer, it can be enjoyed at events, such as Cafes, Restaurants, Drink Bars, and festivals etc.

The attraction of Japanese Shaved ice is the texture and coolness that melts in your mouth.

When you put sweet syrup on fine shaved ice and put it in your mouth.

And Shaved ice made from premium block ice made from clean water gives you the best refreshing and refreshing feeling.

Recently in Japan, premium quality Shaved ice has become a boom and its specialty stores have opened one after another. In such stores, there are a lot of premium fruits, creams and characteristic arrangements, it has become a hot topic on SNS.

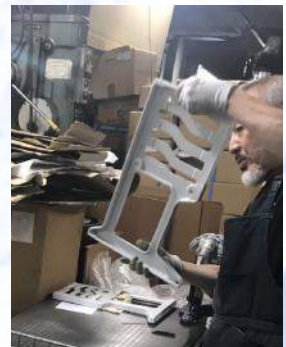


## ◆ SWAN BRAND

Japanese Shaved ice machines are indispensable for making Japanese Shaved ice.

As the top manufacture of Japanese Shaved ice machine, the SWAN brand, they have been producing the highest quality products for many years.

The gear-driven shaved ice machine, especially born to make the best ice is only SWAN made. In addition, it has excellent durability and it is the representative manufacturer in Japan.



**TAKASO**  
Shave



**TAKAHASHI SOHONTEN INC.**





### ◆ TAKASO & TAKASO SHAVE

We, TAKASO (TAKAHASHI SOHONTEN INC.) has the No1 sales record as the top agent of SWAN brand in 2018.

Introducing abundant examples and achievements from major chain stores to famous Shaved ice shops. We will help you succeed in the Shaved ice business.

In addition, we respond to orders from overseas which have been increasing in recent years and also are focusing on export.

TAKASO SHAVE is a brand that spreads the appeal of Japanese Shaved ice widely transmitted oversea by TAKASO.



Unique & excited !



Export to Asia,US and EU.



“kakigori” at GINZA Made by TAKASO SHAVE



We help many customers to start



Japanese shaved ice.

### ◆ The reason why recommends TKSI-100 TH

TAKASO SHAVE’s most recommended TKSI-100TH employs a gear drive system that achieves the highest performance and is equipped with a highest capacity motor.

This machine is the best way to make the fine Shaved ice that is the biggest attraction of Japanese Shaved ice. In addition, the unique skeleton structure can be expected to promote sales to customers by observing how ice can be shaved.

“TAKASO SHAVE” ’s shaved ice is produced from this machine.

### 2020 New model



TKSI-100 TH-M

TAKASO ORIGINAL Shave MODEL



Interesting for customers



Spacious enough for serve



Japanese high quality blade



TAKAHASHI SOHONTEN INC.



# Machine

# Made in

# Japan

Strongly  
Recommended



2020 NEW

## ELECTRIC TYPE for Block Ice 【TKSI-100TH-M】

### Dimensions:

300×385×H671 mm

Weight: 32 kgs

Shaving Capacity:

2.2~2.8kgs/min

Motor: 100V 200W

Power Consumption

: 160/180W (50/60Hz)

Manual (English)

**Caution: This machine is 100Volt for Japanese version.**

**When using in Thailand, please make sure to use the quality transformer to avoid the malfunction or failure.**

## HAND OPERATED TYPE for Rock Ice / Block Ice 【TKSI-7TH】

### Dimensions :

360×360×H680 mm

Weight : 23 kgs

Shaving Capacity:

0.8 kgs/min (Block Ice )

Shaving Disc Diameter: 216mm

ACCESSORIES: Flag

Manual(English)

Photobook for shaved ice (Japanese)

\* When using the Block ice, please remove the cylindric holder for cube ice.

By using the Block ice, you can enjoy more smooth texture shaving ice.

**TAKASO**  
Shave



**TAKAHASHI SOHONTEN INC.**



# Simple to operate. Anybody can easily use it.

ELECTRIC TYPE for Block Ice

TKSI-7TH for Rock Ice

1. Place the block ice on the Shaving Disc.

- Block ice should be placed exactly on the center of the Shaving Disc.



2



2. Turn the Handle so prongs on the Ice Holder are firmly imbedded in the ice.

- When the prongs are firmly imbedded in the ice, check by moving the block ice side ways. Turn the Shield to the front.

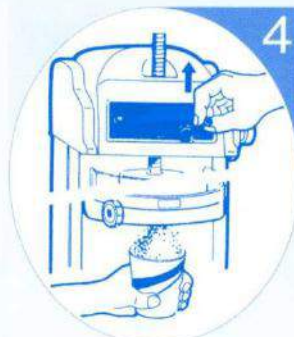
3. Adjust texture of the shaving.

- In this case, turn on the switch and adjust to desired texture.



4. With the switch turned on, receive the shaving with a cup or cone.

4



1. 左下にある刃調節つまみを手前に回して、刃を下げます。その後、ロックアイスを入れます。  
\*刃および氷押さえで手を怪我しないように注意して下さい。



Make flat the blade by turning the adjustment knob in front which located at lower left. And then put rock ice. \* Be careful against injury by blade or ice pressing disc.

2



2. 上のダイヤルで氷押さえをおろし、しっかり氷を押えます。

Lift down the ice pressing disc by turning upper knob and press the rock ice firmly.

3. 右のハンドルを5,6回廻します。その後、もう一度2. を行い、再度氷をしっかり押さえ直します。

Turn the right side handle 5 or 6 times and then repeat again #2 for secure to press the rock ice.



4



4. 右のハンドルを回転させながら、左下の刃調節つまみをゆっくり奥に回していきます。

By turning the right side handle, and turn the texture adjustment knob which located at lower left slowly to backside.

5. 削れたらハンドルを回し続けて器に盛り付けます。刃調節ネジを奥に回せば回すほど削れる氷は粗くなります。削りが粗いときは、刃調節ネジを手前に戻して下さい。

After shaving, keep turning the handle and serve up to a bowl. By turning the adjustment knob to backwards, it's available more rough texture shaving ice. On the other hand, turn the adjustment knob in front, in case of requesting more fine texture shaving ice.



Enjoy your "Takaso Shave"



**TAKASO**  
Shave

**TAKASO**

**TAKAHASHI SOHONTEN INC.**



# FAQ about TAKASO SHAVE & KAKIGORI

**Q : How do I get the ice for Japanese shaved ice?**

**A :** We can get pure block ice easily in Japan. But in abroad, many customers make it by themselves. It is easy for you if you have a freezer. We can advise you how to make it and keep it for better KAKIGORI.

If you use hand operated type machine, you can use rock ice too. When using rock ice, we strongly recommend to use “Kokubo rock ice” . This ice is the best for Kakigori because this is harder to melt than another cube is.

**Respondent**

**Ryo Takahashi**  
SMD of TAKASO



**Q : What is the differences between Bingsu and Kakigori?**

**A :** Bingsu is Korean style shaved ice. Bingsu is made of the tasted block ice. Kakigori, Japanese shaved ice is made of the pure water ice block. Kakigori brings you more refreshing feelings when put in your mouth. In addition, Kakigori is so pure and simple that there are so many variations of topping taste. Also Kakigori is probably more profitable for you.

**Q : What kind of care do I need everyday?**

**A :** After using, wipe off moisture with piece of dry cloth.

**Q : How often should the blade change? Can I sharpen it?**

**A :** We recommend to replace the blade at least 1 or 2 times in a season.

The blade has a special coating finishing. It is not suitable and recommendable for sharpening by yourselves.

**Q : I want to get 220 voltage machine. Can you make and export it?**

**A :** Yes. It needs extra fee to change motor and other components. But it is possible. In fact, we have many experiences of exporting to Asian countries as 220 voltage machine.



**TAKAHASHI SOHONTEN INC.**

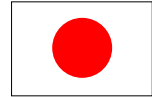
# Enjoy easily

Also small café!

## Japanese Shaved Ice at home !

HAND OPERATED TYPE Mini  
【Black2B】

Dimensions:  
220×202×H436 mm  
Weight:7.1 kgs  
Shaving Capacity:  
0.2kgs/min  
ACCESSORIES:  
Ice Container  
Manual(Japanese)



Made in  
Osaka  
JAPAN

### HOW TO USE

#### 1 Make frozen Ice.

You can make frozen ice by attached ice container.

#### 2 Put a frozen ice on the disc plate.

Press a frozen ice firmly by ice pressing disc.

#### 3 Start to shave ice.

Shaving ice by turning the upper handle.

#### 4 To serve up.

Put your desire syrup and enjoy Japan Shave..!!



### Shop information



Japanese Food Shop  
Makotoya Thailand

46/12, 46/13 Soi Sukhumvit49  
Road Klongton Nua, Wattana,  
Bangkok  
TEL:02-258-1028



facebook



mino  
han.

Japanese Tableware & Kitchenware  
IWATO Thailand

591 UBC II Building Room  
No.1204B, Sukhumvit Rd., Su-  
khumvit 33, North Klongton,  
Wattana, Bangkok  
TEL:02-662-1700



WEBSITE

TAKASO  
Shave



TAKAHASHI SOHONTEN INC.



# For ICE

It's very important to provide you with good ice in order to enjoy a tasty "KAKIGORI" Japanese Shaved ice.

For ice, you can use KOKUBO Rock Ice or Block Ice. For Model TKSI-7TH, you can use KOKYBO Rock Ice and Block Ice.

KOKUBO Rock Ice is the most suitable for KAKIGORI which produced by the exactly same process in Japan and not easy melt, safety and hygienic.

On the other hand, for Block ice, it takes more time to make, however you can enjoy more soft and silky texture shaved ice.

For Model TKSI-100TH, this model is exclusive for Block ice. You are required to provide with Block ice.



KOKUBO Rock Ice



Block Ice

# For SYRUP

Use tasty syrup for tasty KAKIGORI!

CAPTAIN PROFESSIONAL SYRUP is Made in Japan high quality syrup which contained fruit juice and tasty.

This is not only good for KAKIGORI but also suitable for cocktails, alcoholic drinks, beverages and desserts etc..

Besides that, it's available typical Japanese taste Macha, Kyoho (grape) in addition Red Plum, White and Yuzu.

This makes more attractive and unique taste for KAKIGORI.



CAPTAIN SYRUP

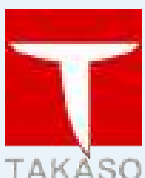
# For TAKASO

TAKASO (TAKAHASHI SOHONTEN INC.) is one of the top class total coordinating company in Japan which handling many kind of Ice Shaving Machines.

We are located in Kappabashi kitchen street, Asakusa, TOKYO. TAKASO group has 4 specialty stores. We offer Japanese eating utensils, western eating utensils, cooking utensils, kitchen equipment, interior furniture, etc. for industrial use and personal use.



TAKASO GROUP



**TAKAHASHI SOHONTEN INC.**

mail to : [takaso18@takaso.jp](mailto:takaso18@takaso.jp)

website : [www.takaso.jp](http://www.takaso.jp)

1-1-11 Matsugaya, Taito-ku, TOKYO, JAPAN 111-0036